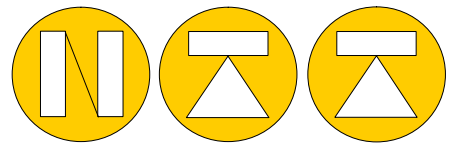
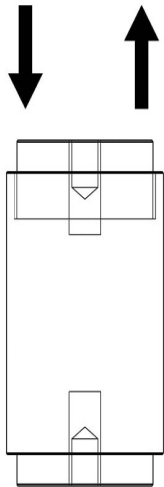


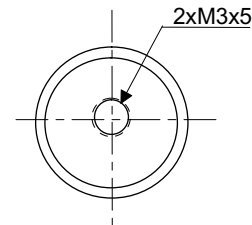
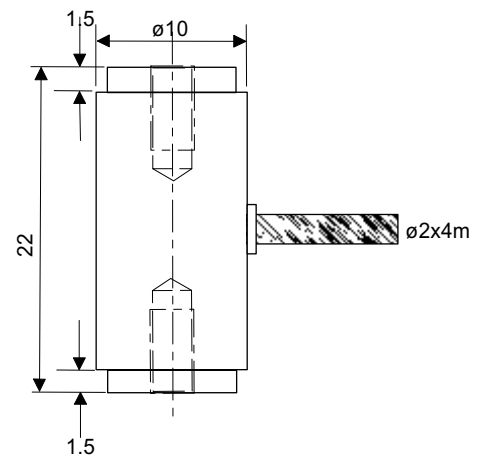
NT-S07-Q-10 MINI TENSION & COMPRESSION
Load Cell Capacity: 0-0.5kg 0-20kg



NORDIC TRANSDUCER



Dimensions: Scale 2:1



NT-S07-Q-10

Nominal Load: 0-500g ... 0-20kg
 Nominal Sensitivity: 2mV/V +/-10% F.S.
 Input Resistance: 350 Ohm +/-5
 Output Resistance: 350 Ohm +/-5
 Supply Voltage: Recommended 5-10V Max. 15 Volt
 Zero Balance: +/-2% F.S.
 Combined error: +/-0,25% F.S.
 Max. side load: 50%
 Max. Dynamic Load: 50%
 Temp. effect on zero: 0.05% F.S. / 10 C°
 Temp. effect on span: 0.05% F.S. / 10 C°
 Protection Class: IP64
 Material : Stainless Steel
 Weight: Load cell 20g
 Cable: Ø2mm x 4m
 Safe Overload: 120% F.S.
 Natural Frequency: >2KHZ

(Verwendungsbereich)			(Zul. Abw.)		(Oberfl.)	Maßstab	(Gewicht)
						(Werkstoff, Halbzeug) Aluminium/Stainless Steel (Rohteil-Nr) (Modell- oder Gesenk-Nr)	
			Datum	Name		NT-S07-Q-10 Tension Compression Cell Nordic Transducer	
			Bearb. 29.09.21	KKD			
			Gepr. 00.00.00	XXX			
			Norm				
			www.ntt.dk ntt@ntt.dk			Blätter	
Zust.	Änderung	Datum	Name	Revision: 18.09.2021-01		Ersatz für:	Ersatz durch: