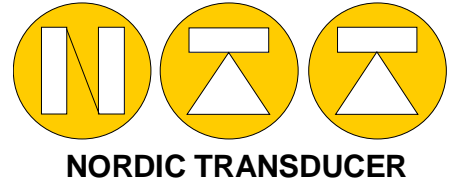


LOAD PIN MB-20-2



MB-20 Stainless steel measuring bolt in high quality stainless steel made for special force measuring jobs where shape and size make this type ideal.

New model design include higher accuracy than normally seen on this type of force sensor and even still very strong and well protected unit for use in industrial environment.

Custom made types is also possible even at smaller quantities.

MB-20-2-xx SPECIFICATIONS

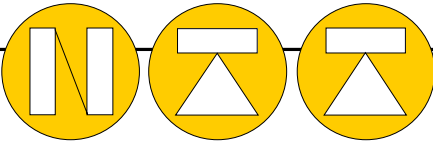
NOMINAL LOAD	1.0t or 2.0t	a) minimum load	0%
MINIMUM RANGE	0-20%	b) service load	100%
COMBINED ERROR	< +/- 0.1%	c) max. permissible load	120%
NON REPEATABILITY F.S.	< +/- 0.01%	d) breaking load	>300%
Creep % F.S. 30 min. 20 MIN	< +/- 0.05	e) max. side load	100%
TEMPERATUR EFFECT	PPM/°C of applied Load	PROTECTION CLASS	IP65
on zero	< 20 PPM/°C		
on span	< 20 PPM/°C	Potted and metal seal	1.0t - 1.5t
NOMINAL SENSITIVITY +/-0.1	* 2.4 - 2.5mV/Volt		
INPUT RESISTANCE	760 +/- 10 Ohm	NOMINAL TEMP. RANGE	- 10/+40 °C
OUTPUT RESISTANCE	700 +/- 3 Ohm	SERVICE TEMP. RANGE	-20/+70 °C
ZERO BALANCE F.S.	+/-1.0%	CELL MATERIAL	Stainless steel
SUPPLY VOLTAGE DC/AC	5V - 15 Volt	CABLE	ø4mm x 4 meter

All specifications subject to change without notice

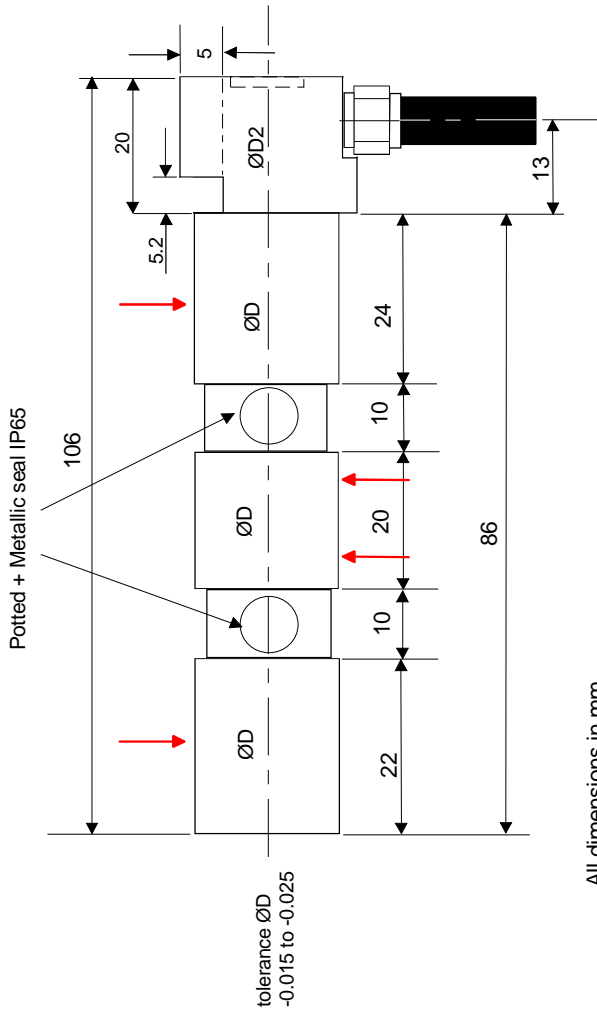
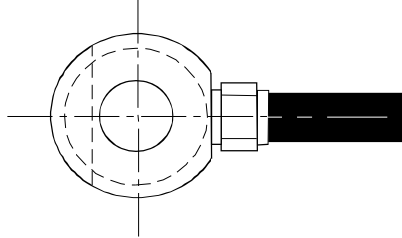
Ref. force: 1 kg = 9.80665N

1.0t = 2.5mV/Volt +/- 0.1

2.0t = 2.4mV/Volt +/- 0.1



NORDIC TRANSDUCER



All dimensions in mm

ØD = 20.00
ØD2 = 24.00

Non linearity +/- 0.10% FS
Hysteresis +/- 0.10% FS
Repeatability +/- 0.03% FS
Zero Balance +/- 1.0% FS
Temp. effect on Zero +/- 0.05% FS/10°C
Temp. effect span +/- 0.05% FS/10°C
Compensated temp. range -10°C +50°C
Input Impedance = 760 Ohm +/- 10
Output Impedance = 700 Ohm +/- 3

Material: High strength stainless steel 2CR13Ni
Protection degree: IP65
700 Ohm resistance, 2mV/V +/- 0.1
Cable: 4mm 4 wire, 4m long

OWNER:	Nordic Transducer Als Odde DK9560 Hadsund Denmark		
TITLE:	LOAD PIN Type: MB20-2	Capacity: 1.0t or 2.0t	
DRAWN BY:	KD	DATE:	22-03-2014
ID:	Drawing # MB20_02_2203 rev. 0214	SCALE:	not scaled