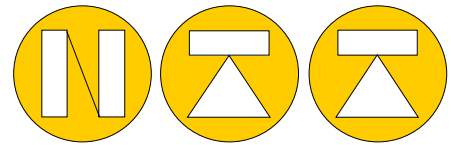


LDU[®] 68.2/3

Load Cell Digitizing unit



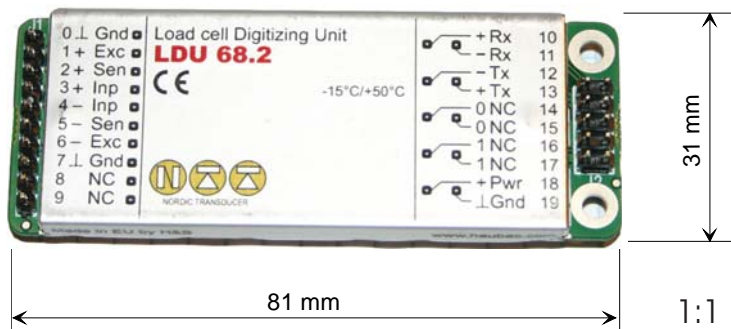
NORDIC TRANSDUCER

LDU 68.2/3 is produced for all industrial type of weighing jobs, as hopper / silo weighing as typical ones.

LDU68.2/3 do have +/- 130.000 internal count and this is done at a rate of 90 conversion per sec.

All setup and data communication is done by means of data communication to PC or operator terminals.

Advanced **TAC** security system for control of calibration data change is also a standard part of the LDU 68.2



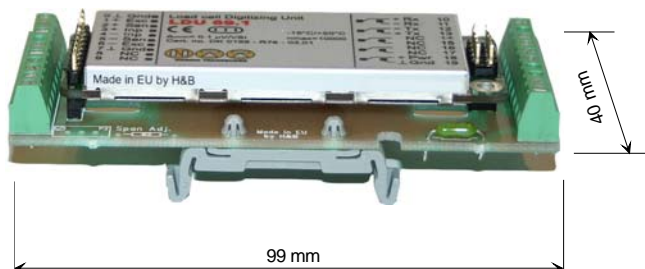
*LDU 68.2 shown here in natural size for direct connection by soldering.
Only 6mm thick*

Other way of mounting please look below

Data LDU 68.2/3

Data	Comments	Commands
Load cell excitation:	5 VDC	
Load cells:	100 - 2000 Ohm (can be = 4 * 1000 Ohm cells)	4 or 6 wire
Load cell input range:	±11mV	same as ± 2,2mV/V
Zero setting range:	+/-2,0mV/V subtractive	TAC**
Span max. Digital.	Factor in n increments/mV/V input	TAC
Calibration security:		TAC
A/D conversion:	±130.000 conv./sec max. at 90 conversions /sec.	
Signal filter adjustable:	LP filter from 0,02Hz -5Hz + additional filter from 0,2 to 3,2 sec in 16 steps of 0,2 sec.	ASCII
Signal filter types:	Gauss; Bessel; Butterworth	ASCII
Display output:	5 updates per sec.	ASCII
Hardware interface:	RS485, RS422-fuld duplex 32 addresses	ASCII
Transmission speed:	9.6, 19.2, 38.4, 57.6, 115.2 kB	ASCII
Transmission type:	Auto transmit or get result on command.	
Linearity:	Typical 1:100.000 in worst case 1:50.000	
Temp. effect on zero:	Typical <25ppm/°K, max. 50ppm/°K	
Temp. effect on span:	Typical <15ppm/°K, max. 30ppm/°K	
Temperature range:	Compensated from -15°C to +50°C	
EMC protections:	All I/O pins protected by T-filters, range 0,1 - 1000 MHz at <3V/m	
Power supply:	12-24 VDC max. 60mA, protected against reversed voltage.	
Conform to Council Directive:	CE in accordance with both 73/23/EEC, 93/98/EEC and 89/336/EEC	

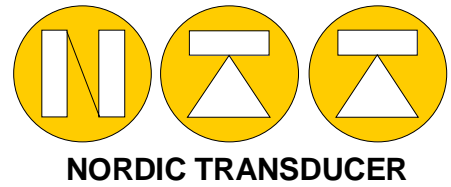
(**TAC stands for Traceable Access Code which do secure that all calibration changes gets recorded)



LDU 68.2 here shown with PC board and screw terminals for DIN rail = option **UA73.2**
Similar type of PC board but supplied with an RS232/422 converter = option **UA77.1**

LDU[®] 68.2 / 3

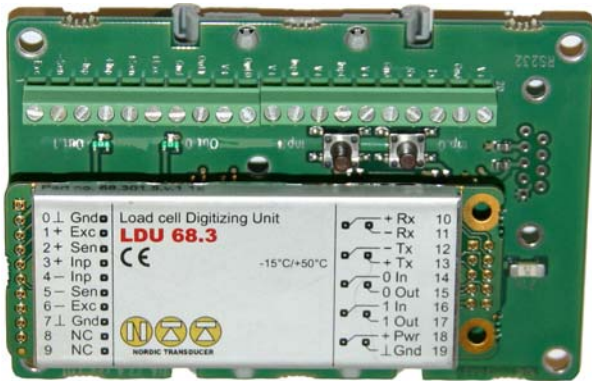
Load Cell Digitizing unit with I/O functions.



NORDIC TRANSDUCER



LDU 68.3 here shown with PC board and screw terminals for DIN rail = option **UA73.2**
 Similar type of PC board but supplied with an RS232/422 converter = option **UA77.1**



UA77.4
LDU68.3 do also have I/O functions
 Can be mounted on a UA77.4 PC board, with screw terminals for the different functions + a RS232 converter output.

Logic inputs 2; Reversed voltage and ESD protected with function as programmed 10-30V; 1-3mA; Ref. to ground

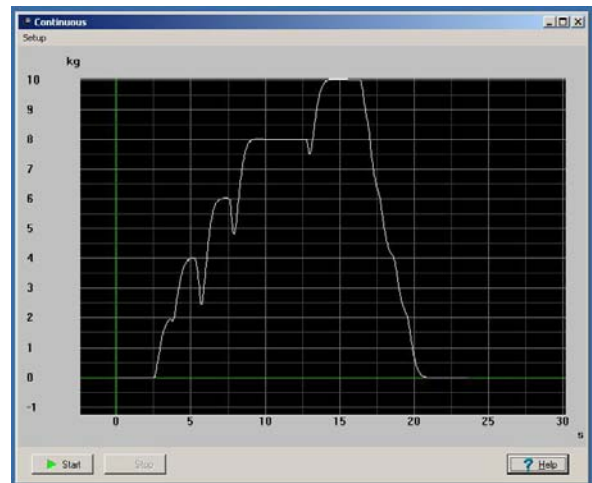
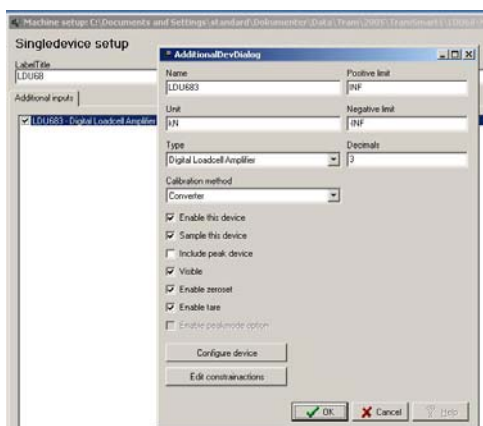
Logic outputs 2 x OC's over current and ESD protected with function as programmed <30Vdc; 0,2A; Ref. to ground

TramSmart Software



LDU TramSmart PC software for indication on screen ++

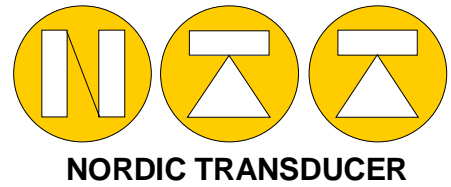
Setup from PC of all important parameters



X Y graph with individual setup and paste into other programs as Excel

LDU[®] 68.2 - 68.3

Load Cell Digitizing unit



Typical Load cells used in combination with LDU68.2 / 3



C8S supplied from 500kg to 100ton
700 ohm or 5kN to 1mill N



ACB IP66/68 supplied from 250kg til 5t,
1000 ohm C3 - C6



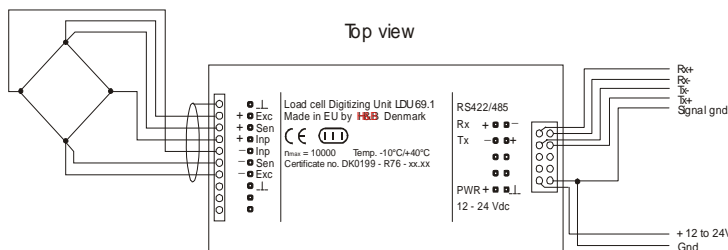
GY-2 silo load cells from 2.5t to 20 ton
For more controlled environment



UPC2S silo mounts systems
from 250kg to 30 ton all
in stainless teel



MB30 load Pin 2.5kN to 10kN



Bottom view



- Sw1 & Sw2 : Close for 4-wire loadcell
- Sw3 : Close to enter configuration mode
- Sw4 : Do NOT close - used for program download