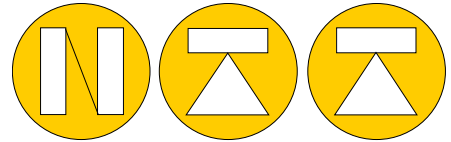
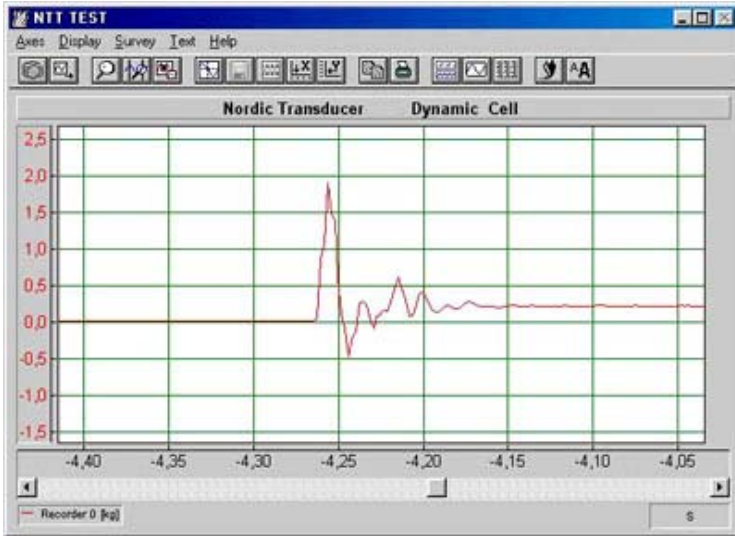


HSCE DYNAMIC Load Cell



NORDIC TRANSDUCER



The HSCE is a unique fully welded stainless steel single point load cell constructed so that it do have a very fast response compared with other load cells, that's why this HSCE is unique for utilization in jobs like check-weighing, belt scales & multi-head weighing machines.

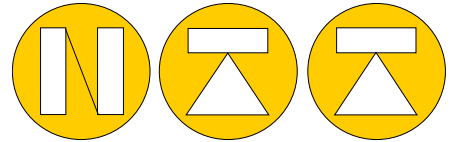
SPECIFICATIONS HSCE

NOMINAL LOAD in kg	6 - 12 - 30 - 60 kg		
Accuracy class according to:	OIML R60 - C3		
Combined Error	< +/- 0.02%		
Non Repeatability	< +/- 0.01%		
Minimum Dead Load output return	< +/- 0.0167%		
Creep Error (30 Minutes)	< +/- 0.0245%		
Linearity & Hysteresis	< +/- 0.020 %S.		
Temp. effect on Min Dead Load	< +/- 0.017 %S/10 °C		
Temp. effect on sensitivity	< +/- 0.014 %S/10 °C		
NOMINAL SENSITIVITY +/-0.1%	2mV/Volt		
INPUT RESISTANCE	400 Ohm +/-20		
OUTPUT RESISTANCE	350 Ohm +/-3.5	DISPLACEMENT N.LOAD	0.24-0.19-0.15-0.22
SUPPLY VOLTAGE N.10V	5 - 18 Volt	NOMINAL TEMP. RANGE	-10/+40 °C
		SERVICE TEMP. RANGE	-40/+80 °C
		STORAGE TEMP. RANGE	-40/+90 °C
MECHANICAL LIMIT VALUES RELATED TO NOMINAL LOAD		PROTECTION CLASS	IP66/68
a) minimum dead load	0%	ECCENTRIC LOAD EFFECT	0.03 % S
b) service load	100%	CELL MATERIAL Stainless	DIN 1.4542
c) max. permissible load	150%	CABLE (6 wire PUR) LENGTH	6 meter
d) breaking load	>300%	FIXING SCREWS	
e) max. side load	100%	Diameter	M6
f) max. dynamic load	75%	Tightening torque	20Nm

All specifications subject to change without notice

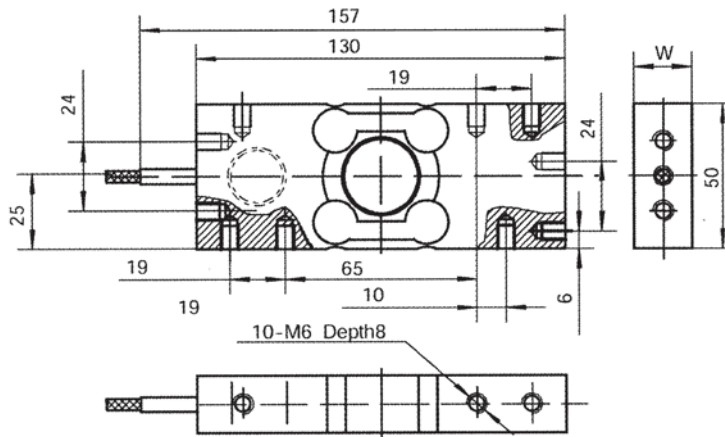
Nordic Transducer Als Oddevej 85 DK-9560 Hadsund Danmark
 Tlf. +45 98 58 14 44 fax. +45 98 58 18 66 e-mail: ntt@ntt.dk WEB: www.ntt.dk

HSCE DYNAMIC Load Cell



NORDIC TRANSDUCER

Dimensions in mm



Capacity	W
6kg	18.5
12kg	18.5
30kg	18.5
60kg	23.5

Connections:

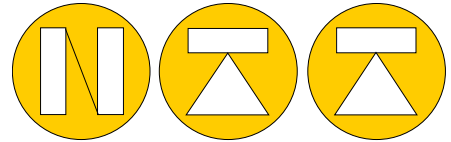
Green = + Input
Yellow = + Sense
White = + Output

Black = - Input
Blue = - Sense
Red = - Output



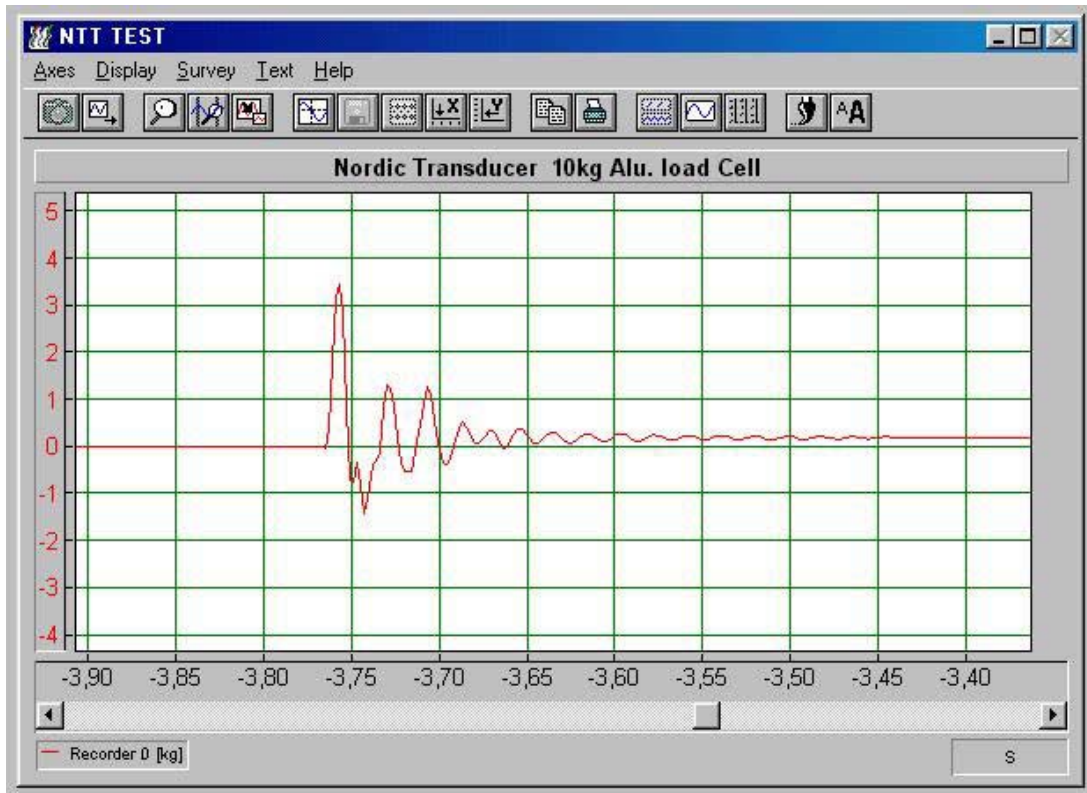
For other type of jobs please take a look at this range of cells covering from 5kg to 1000kg
From class CC to C4, C5, C6 depending on type.
The dynamic reaction is also very good for this type of cells.

Nordic Transducer Als Oddevej 85 DK-9560 Hadsund Danmark
Tlf. +45 98 58 14 44 fax. +45 98 58 18 66 e-mail: ntt@ntt.dk WEB: www.ntt.dk

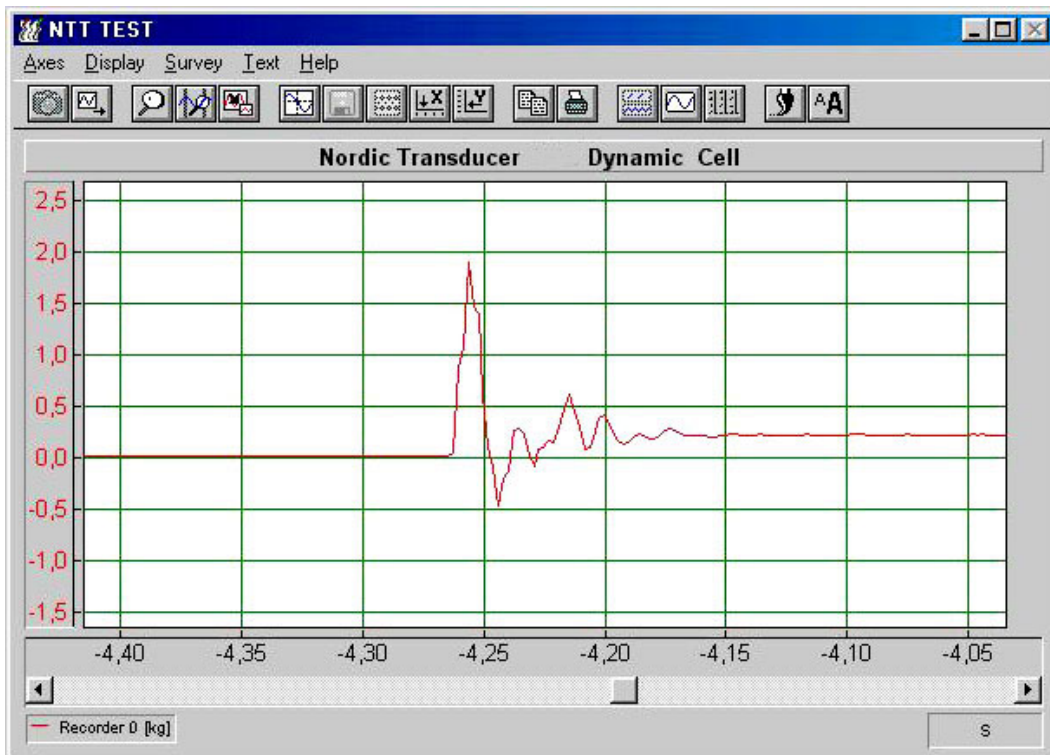


NORDIC TRANSDUCER

*Shock test response on single point load cells:
A 250 gram solid rubber piece is dropped down from a distance on approx. 50mm unto the platform on a normal 10 kg aluminium cell and a 12 kg HSCE Dynamic Load cell*



Here is shown the different on a normal aluminium load and a HSCE. As can be seen above the 10 kg alu. cell do ring out for a long time approx.300 msec. before it's back on track again

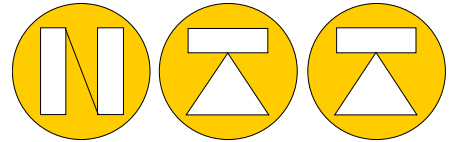


The HSCE is back again within 75 msec. !!! that's why it is superb for dynamic weighing jobs.

Nordic Transducer Als Oddevej 85 DK-9560 Hadsund Danmark
Tlf. +45 98 58 14 44 fax. +45 98 58 18 66 e-mail: ntt@ntt.dk WEB: www.ntt.dk

Gravity acceleration $g = 9.804537 \text{ m/s}^2$

PM70IDATA\HSCE1012018

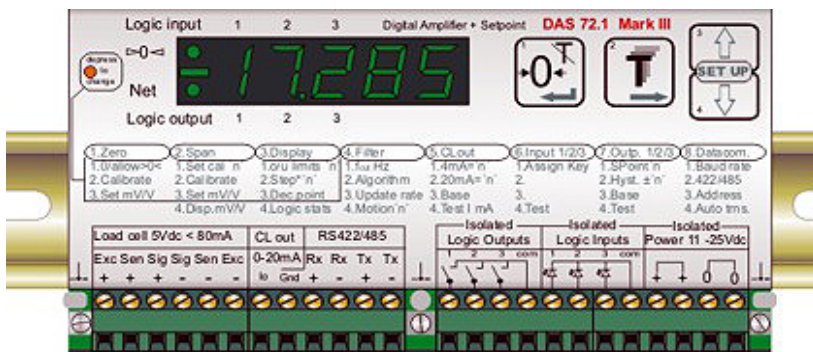


NORDIC TRANSDUCER

High speed electronic for use in connection with HSCE load cells



LAU63.1 analogue excitation unit with 3300 Hz speed +/- 10Volt out



DAS72.1 MKIII

Internal A/D update rate 2600 per sec.

Analogue max. output rate 600 per sec.

RS422/485 output rate from 50--600 per sec. depending on filter settings,



LDU78.1 OIML approved unit for fast checkweigher or filling machine jobs with up to 2400 updates/second at any mode, on command !

Nordic Transducer Als Oddevej 85 DK-9560 Hadsund Danmark
 Tlf. +45 98 58 14 44 fax. +45 98 58 18 66 e-mail: ntt@ntt.dk WEB: www.ntt.dk