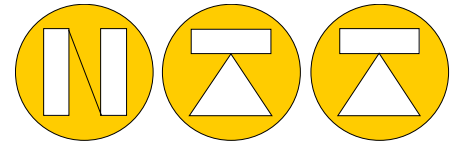
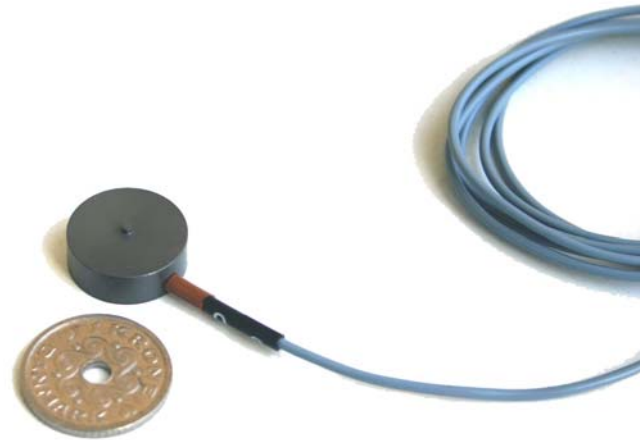


BC302 Compression cell from 3kg to 100kg



NORDIC TRANSDUCER

Mini Button Load Cells
 the series BC302 button load cells find their main applications where the very low profile and the extreme compactness are important. They are used in static and dynamic measurements as compression cells, for general purpose on machines, for robotics as tactile sensors and for multipoints measurements.



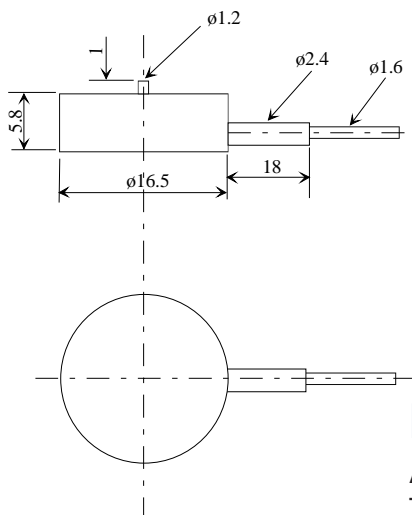
1:1

BC302 SPECIFICATIONS

NOMINAL LOAD	3-6-12-20-30-60-100kg	a) minimum load	0%
MINIMUM RANGE	20%	b) service load	100%
COMBINED ERROR (typical)	< +/- 0.5%	c) max. Permissible load	100%
NON REPEATABILITY	< +/- 0.1%	d) Over load	>150%
TEMPERATURE EFFECT °C		e) max. Side load	50%
on zero	< +/- 0.05 %	f) max. Dynamic load	50%
on span	< +/- 0.05 %		
		NOMINAL TEMP. RANGE	0/+40 °C
NOMINAL SENSITIVITY approx	1.7 -2mV/Volt	PROTECTION CLASS	IP54
INPUT RESISTANCE	350 Ohm	WEIGHT	8 gram
OUTPUT RESISTANCE	350 Ohm	CELL MATERIAL 3-30kg	Aluminium
ZERO BALANCE	3%	CELL MATERIAL 60-100kg	Stainless Steel
SUPPLY VOLTAGE N. 5V	2 - 6 Volt	Ø1.5mm CABLE 4 wire	1 meter long

All specifications subject to change without notice

Dimensions in mm



Wiring:

Excitation+ Red
 Excitation- Green
 Output+ Blue
 Output- Colorless



Nordic Transducer

Als Odde, DK-9560 Hadsund Denmark
 Tel.: +45 98581444, Fax.: +45 98581866
 E-mail: ntt@ntt.dk WEB: www.ntt.dk

