



Capacity from 50 kg to 500 kg



- ALUMINUM ALLOY
- COMBINED ERROR $\leq \pm 0.02\%$ (0.017% C4)
- PROTECTION CLASS IP65

CAPACITY	kg	ACCURACY CLASS		IECEx	Ex	EAC	EAC Ex	PLATFORM (mm)	NET WEIGHT (kg)	CODE
		C3	C4							
50		•	–	•	•	•	•	600 x 600	1.7	APL50
100		•	–	•	•	•	•	600 x 600	1.7	APL100
150		•	•	•	•	•	•	600 x 600	1.7	APL150
200		•	•	•	•	•	•	600 x 600	1.7	APL200
300		•	•	•	•	•	•	600 x 600	1.7	APL300
500		•	•	•	•	•	•	600 x 600	1.7	APL500

ON REQUEST

CERTIFICATIONS

OIML R60 C3

Complies with the Eurasian Custom Union standards

CERTIFICATIONS ON REQUEST

ATEX II 1GD (zone 0-1-2-20-21-22)

IECEx (zone 0-1-2-20-21-22)

OIML R60 C4

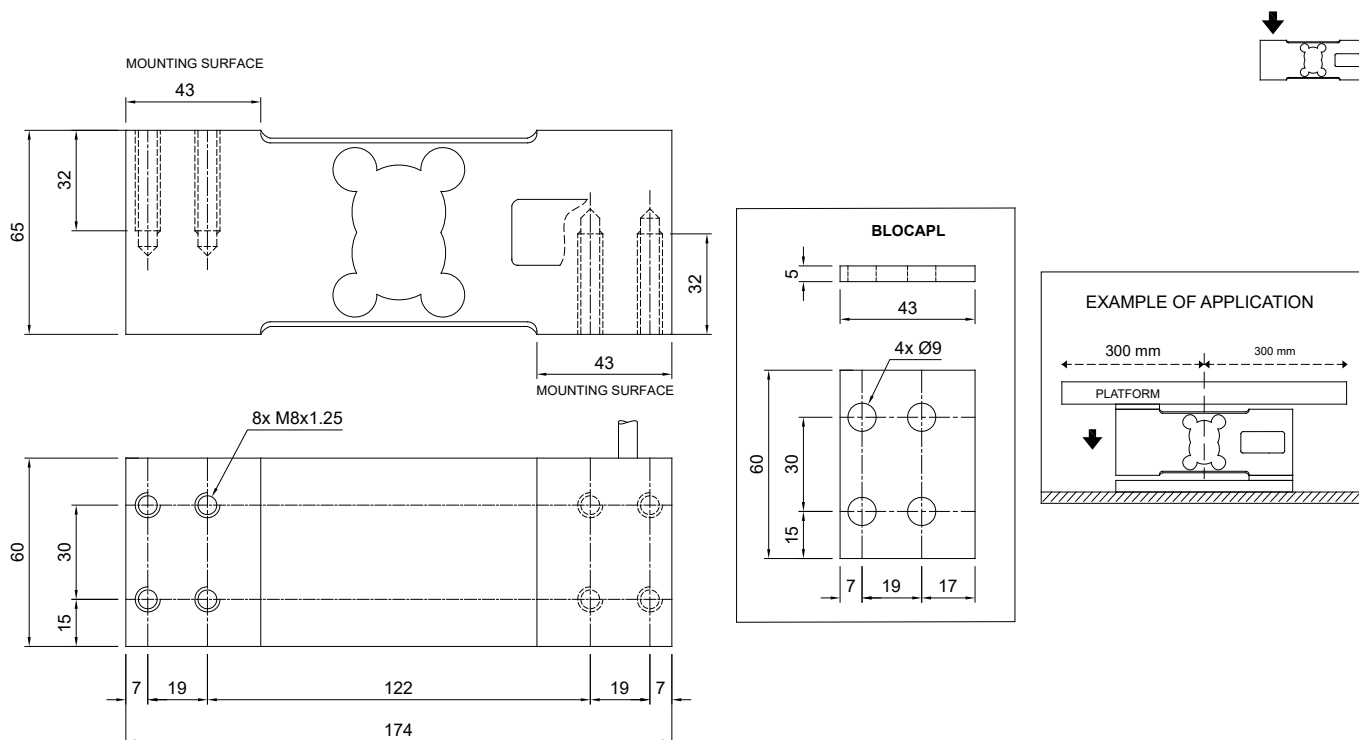
Complies with the Eurasian Custom Union standards for use in potentially explosive atmospheres

Replace TH-1263 & Brecknell L6E3

COMPLEMENTARY ACCESSORIES

	DESCRIPTION	CODE
	Stainless steel and rubber waterproof kit (Ø 107x245 mm cable gland included)	IP68APLPRE
	Stainless steel drawn block.	BLOCAPL

DIMENSIONS (mm)

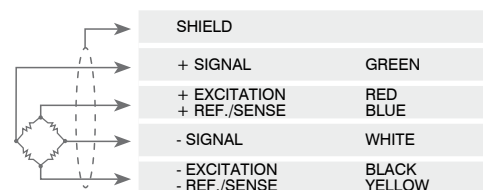


TECHNICAL FEATURES

Material	Aluminum alloy	
OIML R60 Accuracy class • Verification intervals	C3 • 3000	C4 • 4000
Nominal load (E max)	50 - 100 - 150 - 200 - 300 - 500 kg	150 - 200 - 300 - 500 kg
Minimum verification interval (V min)	E max / 12000	E max / 15000
Combined error	≤ ±0.02%	≤ ±0.017%
Protection class	IP65	
Rated output	2 mV/V ±10%	Input resistance 409 Ω ±6
Temperature effect on zero	0.0017% °C	Output resistance 350 Ω ±3
Temperature effect on span	0.0014% °C	Zero balance ≤ ±1%
Compensated temperature range	-10 °C / +40 °C	Insulation resistance ≥5000 MΩ
Operating temperature range	-35 °C / +65 °C	Safe overload (% of full scale) 150%
Creep at nominal load in 30 minutes	0.015%	Ultimate overload (% of full scale) 300%
Max supply voltage without damage	18 V	Deflection at nominal load 0.5 mm

ELECTRICAL CONNECTIONS

Cable length	3 m
Cable diameter	6 mm
Cores	6 x 0.20 mm ²



Replace TH-1263 & Brecknell L6E3