

ACB SINGLE ENDED BEAM LOAD CELL



DESCRIPTION:

The ACB is a high performance stainless steel beam type load cell. An integral mounting step removes the need for spacer plates and ensures optimum "bolt down" conditions.

This product is suitable for small and medium platform scales, hybrid scales, pallet weighers and process weighing.

The fully welded construction and the cable entry ensure that this product can be used successfully in harsh environments found in the food, chemical and allied process industries.

FEATURES:

- Low profile, stainless steel construction.
- Hermetically sealed, IP66 and IP68
- Certified to OIML R60, **6000d²**
- 1000 Ω bridge impedance
- Current calibration output (SC) ensures easy and accurate connection of multiple load cells
- Integral mounting step
- **Capacities:**
250, 500, 1000, 2000 and 5000kg

ACB: SPECIFICATIONS

Capacity	E_{max}	kg	250 ² , 500 ² , 1000, 2000, 5000			
			C3	C4	C5	C6
Accuracy Class According to OIML R60 ²			3000	4000	5000	6000
Maximum Number of Verification Intervals	n_{ic}		$E_{max}/6000$	$E_{max}/8000$	$E_{max}/10000$	$E_{max}/12000$
Minimum Verification Interval ($V_{min} = E_{max}/Y$)	V_{min}		$E_{max}/15000$	$E_{max}/20000$	$E_{max}/20000$	$E_{max}/20000$
Minimum Verification Interval, Type MR	V_{min}					
Accuracy Class According to Type Designation ¹		CC	C3	C4	C5	C6
Combined Error	%S	$\leq \pm 0.050$	$\leq \pm 0.023$	$\leq \pm 0.018$	$\leq \pm 0.014$	$\leq \pm 0.012$
Hysteresis	%S	$\leq \pm 0.050$	$\leq \pm 0.017$	$\leq \pm 0.013$	$\leq \pm 0.010$	$\leq \pm 0.008$
Non-Repeatability	E_R	%S	$\leq \pm 0.070$	$\leq \pm 0.035$	$\leq \pm 0.026$	$\leq \pm 0.018$
Creep Error (30 Minutes)	%S	$\leq \pm 0.060$	$\leq \pm 0.025$	$\leq \pm 0.018$	$\leq \pm 0.015$	$\leq \pm 0.012$
Creep Error (20-30 Minutes)	%S	$\leq \pm 0.0200$	$\leq \pm 0.0053$	$\leq \pm 0.0039$	$\leq \pm 0.0032$	$\leq \pm 0.0026$
Minimum Dead Load Output Return	MDLOR	%S	$\leq \pm 0.050$	$\leq \pm 0.017$	$\leq \pm 0.013$	$\leq \pm 0.010$
Minimum Dead Load Output Return, Type MI6	MDLOR	%S _{nom}	$\leq \pm 0.008$	$\leq \pm 0.008$	$\leq \pm 0.008$	
Temp. Effect on Min. Dead Load Output	TC_o	%S _{nom} /5°C	$\leq \pm 0.0250$	$\leq \pm 0.0117$	$\leq \pm 0.0088$	$\leq \pm 0.0070$
Temp. Effect on Min. Dead Load Output, Type MR	TC_o	%S _{nom} /5°C	$\leq \pm 0.0047$	$\leq \pm 0.0035$	$\leq \pm 0.0035$	$\leq \pm 0.0035$
Temperature Effect on Sensitivity	TC_s	%S/5°C	$\leq \pm 0.0250$	$\leq \pm 0.0088$	$\leq \pm 0.0065$	$\leq \pm 0.0053$
Minimum Deadload	E_{min}	%E _{max}	0			
Safe Load Limit	E_{lim}	%E _{max}	150			
Ultimate Load	E_{ult}	%E _{max}	300			
Maximum Safe Sideload		%E _{max}	100			
Deflection at E_{max}		mm	..., 0.12, 0.25, 0.44, ...			
Excitation Voltage		V	5 ... 12			
Maximum Excitation Voltage		V	15			
Rated Output	S_{nom}	mV/V	2 ± 0.02			
Current Calibration	SC-version		Standard			
Zero Balance		%S _{nom}	± 1.0			
Input Resistance	R_{in}	Ω	1000 ± 50			
Output Resistance	R_{out}	Ω	1000 ± 10			
Insulation Resistance	R_{ins}	M Ω	≥ 5000			
Compensated Temperature Range	T_{cps}	°C	-10 ... +40			
Operating Temperature Range	T_{opr}	°C	-40 ... +80			
Storage Temperature Range	T_{sra}	°C	-40 ... +90			
Element Material			Stainless steel 1.4542			
Sealing (DIN 40.050 / EN 60.529)			IP66 and IP68			
Recommended Torque on Fixation Bolts		Nm	150			
ATEX options for Potentially Explosive Atmospheres			Pending			

- The specified accuracies apply for the compensated temperature range.
- Capacities 500kg, 1, 2 and 5t are OIML R60 approved. Other capacities pending.

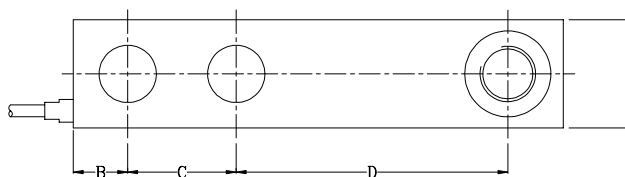
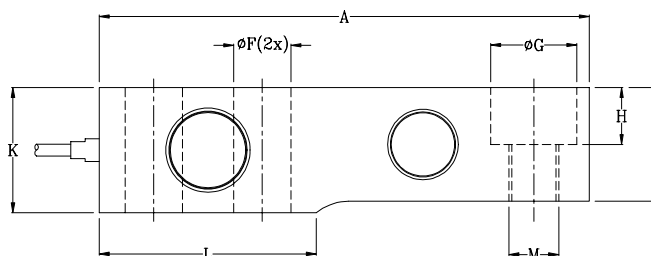
SC-version: The rated output and the output resistance are balanced in such a way, that the output current is calibrated to within 0.05% of a reference value. This allows easy parallel connection of the load cells.

Correct mounting of the load cells is essential to ensure optimum performance. Further information is available on request. All specifications subject to change without notice.

REVERE TRANSDUCERS EUROPE B.V.

-
-
-
-
- web: www.ntt.dk

REGIONAL OFFICE DK
Nordic Transducer
Als Oddevej 85
DK-9560 Hadsund Denmark
Tel.: (+45) 98 58 14 44
Fax.: (+45) 98 58 18 66
E-mail: ntt@ntt.dk



Cable specifications:
Length 3m for capacities up to 1t.
Length 6m for 2t and 5t.
6-Wire cable standard.

Excitation + Green
Excitation - Black
Output + White
Output - Red
Sense + Yellow
Sense - Blue
Shield Transparent
Shield is not connected to the load cell body.

E_{max} (kg)	Dimensions in mm				
	250	500	1000	2000	5000
A	130.0	130.0	130.0	130.0	172.0
B	15.5	15.5	15.5	15.5	19.1
C	25.4	25.4	25.4	25.4	38.1
D	76.2	76.2	76.2	76.2	95.3
E	31.8	31.8	31.8	31.8	38.0
F	13.0	13.0	13.0	13.0	20.5
G	20.5	20.5	20.5	20.5	30.2
H	14.2	14.2	14.2	14.2	20.0
J	25.2	26.0	27.95	31.95	40.0
K	31.8	31.8	31.8	31.8	44.0
L	57.1	57.1	57.1	57.1	76.2
M	M12	M12	M12	M12	M20

All dimension tolerances according to DIN 7168, middle accuracy, unless otherwise specified.