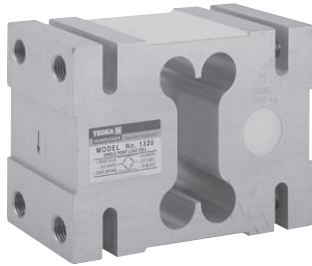


High Capacity Single Point Load Cell



Model 1320 is a high capacity single point load cell designed for direct mounting of low profile, high capacity weighing platforms up to 1200 x 1200mm.

Its large platform size simplifies the construction of floor scales, weigh bars, hanging scales and other types of weighing machines with a capacity up to 2000kg.

All load cells are individually adjusted to eliminate corner

FEATURES

- Capacities 1000-2000kg
- Anodized aluminum construction
- Single point 1200 x 1200mm platform
- 6 Wire (sense) circuit
- IP66 protection
- Hazardous area approved to FM & EEx IIC T4

errors, tested and calibrated to meet OIML specifications.

A special humidity resistant coating assures long term reliability.

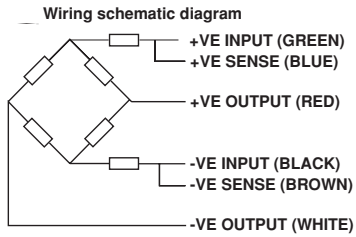
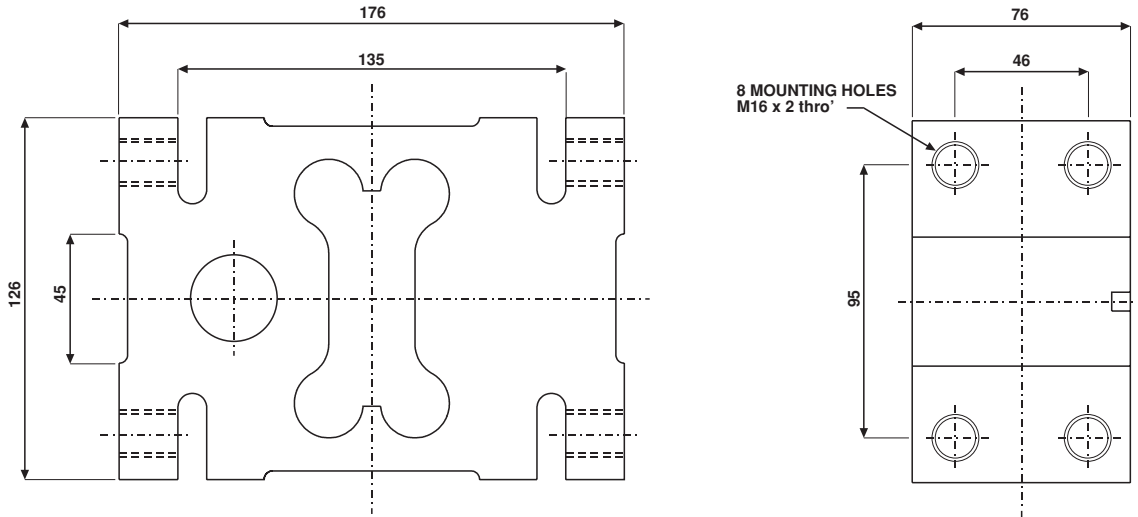
The two additional sense wires feed back the voltage reaching the load cell. Complete compensation of changes in lead resistance due to temperature change and/or cable extension, is achieved by feeding this voltage into the appropriate electronics.

| SPECIFICATION | | | | | |
|---|--|------------------|------------------|------------------|---|
| GRADE | E | F | G | C3** | UNITS |
| Rated Capacities | 1000, 1500, 2000, | | | | kg |
| Rated Output | 2 ± 10% | | | | mV/V |
| Total Error* | 0.030 | 0.020 | 0.020 | 0.020 | ± % of applied load |
| Zero Return after 30 mins | 0.050 | 0.025 | 0.017 | 0.017 | ± % of applied load |
| Temperature Effect: On Output On Zero | 0.0030 0.0100 | 0.0014 0.0060 | 0.0010 0.0040 | 0.0010 0.0023 | ± % of applied load/°C ± % of rated load output/°C |
| Eccentric Load Error | 0.0025 | 0.0025 | 0.00165 | 0.00165 | ± % of applied load/cm |
| Zero Balance | 10.0 | | | | ± % of rated output |
| Temperature Range: Operating Compensated | - 30 to + 70 - 10 to + 40 | | | | °C °C |
| Safe Overload | 150 | | | | % of rated capacity |
| Ultimate Overload | 200 | | | | % of rated capacity |
| Excitation: Recommended Maximum | 10 15 | | | | Volts AC or DC Volts AC or DC |
| Input Impedance | 415 ± 15 | | | | Ohms |
| Output Impedance | 350 ± 3 | | | | Ohms |
| Insulation Impedance | > 2000 | | | | MegaOhms |
| Deflection at Rated Capacity | < 0.8 | | | | mm |
| Weight | 3.7 | | | | kg |
| Construction | Anodized Aluminum | | | | |
| Environmental Protection | IP66 | | | | |
| Cable | 5 Meters (Standard), 6 Wire, Polyurethane Jacket, Dual Floating Screen | | | | |

*Total Error - According to OIML R60 **Standard 50% utilization. Other utilization factors available on request

High Capacity Single Point Load Cell

DIMENSIONS in millimeters



VISHAY TRANSDUCERS (VT) - SALES OFFICE Denmark

Nordic Transducer

Als Odde DK9560 Hadsund Denmark
 ph.: +45 98581444 - Fax. +45 98581866
 e-mail: ntt@ntt.dk - web: www.ntt.dk