

Aluminum Single Point Load Cell



FEATURES

- Capacities 3-90kg
- Anodised aluminum construction
- Single point 400 x 400mm platform
- 6 wire (sense) circuit
- Adjustable overload protection
- NTEP & Factory Mutual approved
- Hazardous area approved to EEx ia IIC

Model 1010 is a single point load cell designed for direct mounting of low cost, low capacity weighing platforms.

Its use in large platforms, combined with its high accuracy and low cost, makes this load cell ideally suited for a large range of weighing applications, including bench scales and counting scales.

A special humidity resistant protective coating is available which ensures long term reliability. For hazardous

environments this load cell has EEx ia IIC T4 level approved option.

Model 1010's built-in overload stop can provide mechanical protection against overloading.

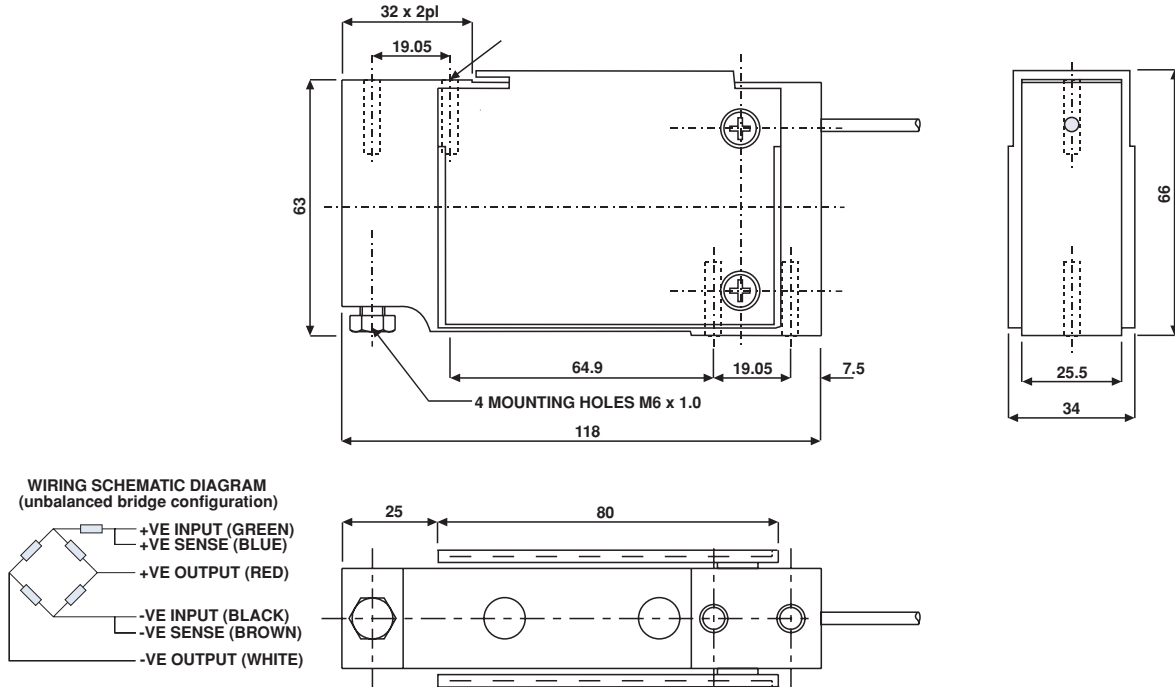
The two additional sense wires feed back the voltage reaching the load cell. Complete compensation of changes in lead resistance due to temperature change and/or cable extension is achieved by feeding this voltage into the appropriate electronics.

SPECIFICATIONS			
GRADE	E	G	UNITS
Rated Capacities	3, 5, 7, 10, 15, 20, 30, 50 [#] , 90 ^{**}		kg
Rated Output	2.0 ± 10%		mV/V
Total Error*	0.030	0.020	± % of applied load
Zero Return after 30 mins	0.050	0.017	± % of applied load
Temperature Effect: On Output	0.003	0.00.	± % of applied load/°C
On Zero	0.010	0.004	± % of rated output/°C
Eccentric Loading Error	0.0074	0.0049 [#]	± % of applied load/cm
Zero Balance	10.0		± % of rated output
Temperature Range: Operating	- 30 to + 70		°C
Compensated	- 10 to + 40		°C
Safe Overload	150		% of loaded capacity
Excitation: Recommended	10		Volts AC or DC
Maximum	15		Volts AC or DC
Input Impedance	415 ± 15		Ohms
Output Impedance	350 ± 3		Ohms
Insulation Impedance	> 5000		MegaOhms
Deflection at Rated Capacity	< 0.4		mm
Weight	0.4		kg
Construction	Anodized Aluminum		
Environmentle Protection	IP54 (IP67 Optional)		
Cable	1 meter (standard), 6 wire, PVC jacket, floating screen		

*Total Error - According to OIML R60. [#]50kg eccentric loadong error 0.0057 (35 x 35cm) platform. ^{**}90kg available in E and F grades only

Aluminum Single Point Load Cell

DIMENSIONS in millimeters



VISHAY TRANSDUCERS (VT) - SALES OFFICE Denmark

Nordic Transducer
 Als Odde DK9560 Hadsund Denmark
 ph.: +45 98581444 - Fax. +45 98581866
 e-mail: ntt@ntt.dk - web: www.ntt.dk